

# The Octagon Centre



Octagon  
centre

The following specifications include lists of all the equipment the venue has in regular stock. There maybe an additional charge for each item of equipment. If any further equipment is required, Performance venues can contact external companies for hire quotes. There is an equipment request form at the end of this document should his service be required.

# Venue details

## Stage Dimensions

The Octagon uses modular Sico staging that can be arranged into a wide variety of configurations. The stage can also vary in height and be arranged in tiered formats. Please enquire for more details about the other arrangements available.

Stage dimension (ft)	Height available
32'x12'	3', 4', 18"
24'x12'	3', 4', 18"
32'x16'	3', 4'
32'x24'	3', 4'

## Clearances

	Height	Width
Loading Door	2m	1.7m
Max height of ceiling	6.7m	n/a

Note:

The Octagon ceiling is not level. It rises to a peak in the centre of the room. The ceiling closer to the walls is significantly lower than 6.7m. Please enquire for more details if this is relevant to your hire.

The Octagon ceiling is also not clear of obstacles; there are air handling pipes, trusses and lighting fixtures that hang lower than the max height. Please ensure you have checked the placement of any tall objects carefully.

# Sound

## Equipment list

Loudspeakers	Number
L'Acoustics Arcs Wide	2
L'Acoustics Arcs Focus	2
L'Acoustics SB18 Sub	4
L'Acoustics 12XT	7
Opera active speaker	2

Microphones	Number
Sure SM58	8
Sure SM57	8
AKG 414	2
AKG C747	4
AKG GN30	3
DPA 4099	4
Sennheiser EW300 G3 Handheld	4
Sennheiser EW300 G3 Handheld	2

Control	Number
DigiCo SD31	1
Behringer X32	1
Soundcraft Spirit M12	1

# Lighting

## Equipment list

Fixtures (Intelligent)	Number
Chauvet Rogue R2 Spot	4
Prolights Diamond 19	4
Prolights Diamond 7	4
ETC Colorsource spot 25/50 deg	2
ETC Colorsource spot 50deg	2
Chauvet COLORado Tri-Tour	16
ETC S4 Lustr2 w/15/30 deg zoom lens	4

Fixtures (Generic)	Number
Selecon Rama 1k Fresnel	24
Strand Patt. 742 1K Fresnel	4
ETC S4 Zoom 15/30 profile	4
ETC S4 Mini	4
Par64	5
Iris 1 Flood	8
UV Cannon	8

Control	Number
Avolites Arena	1
Avolites Pearl Tiger	1
Chamsys MagicQ PC	1

# AV

## Equipment list

Display equipment	
Sharp 1080p video wall	1

Projectors	
Hitachi CP-x5500	2
Hitachi CP-WU840	1
Hitachi CP-X5022W	1

Signal	
Extron HDMI over Cat5 receivers	7
Kramer HDMI over Cat5 (send and receive)	2
Hitachi VGA over Cat5 (send and receive)	1

### Notes:

The video wall is fixed in place in the bar bay. There is a PC in the lectern that interfaces directly with it. It is highly recommended that this PC is used for presentations to avoid any compatibility issues.

# Rigging

The Octagon has 5 permanently installed trusses. The central, main truss is in a fixed location and cannot be moved. The 4 outer trusses are evenly spaced around the hall as standard. These can be relocated to other suitable locations if required. The 8 beams that run from the centre of the hall to the wall are used as the rigging locations and have a SWL of 2 tonnes. All of the trusses are on motorised chain blocks.

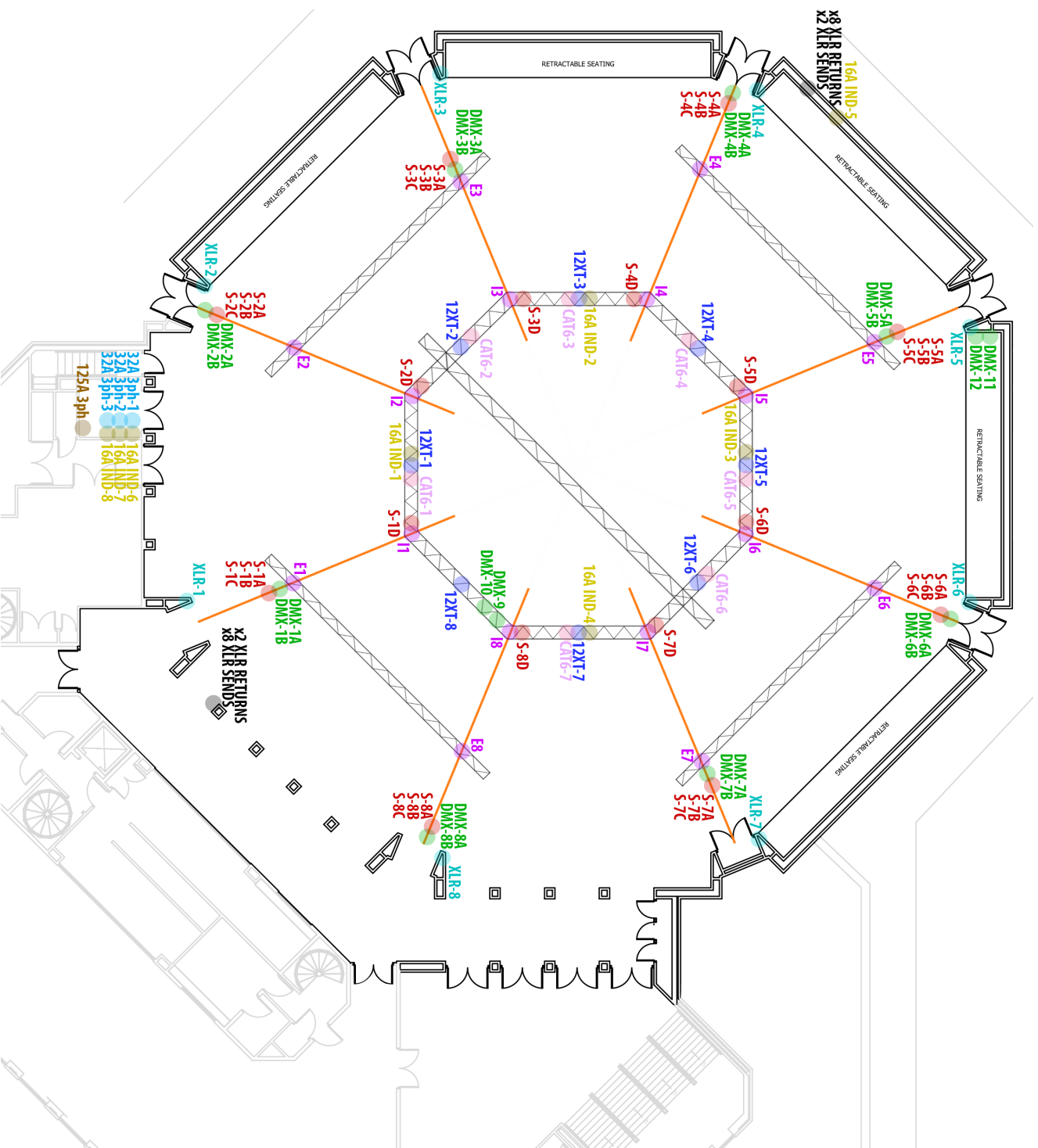
The rigging use to hang the house trusses is for that purpose only and the Octagon does not carry any other rigging equipment. Any other equipment brought into the venue must be in good condition and may require inspection before use. All rigging plans **MUST** be agreed to well in advance of the event. Performance Venues reserves the right to deny the use of any rigging that is either dangerous or not authorised.

# Power

The Octagon carries enough power distribution to supply 40 exhibition stands with 2 13a sockets. This system is compliant with BS7909 and can be configured to fit most event layouts. Any cables that pass in front of fire escapes or across any walkway must be contained within appropriate cable matting. The venue has a small stock of these. Any equipment that draws a significant amount of power should be cleared with the venue well in advance of the get-in. All portable equipment must have evidence of PAT before it is used in the venue.

Item	Amount
5m 16a cable	35
10m 16a cable	25
15m 16a cable	25
5m 32a cable	5
10m 32a cable	5
15m 32a cable	5
16a to 12x13a and 16a through distro	20
32a to 4x16a distro	4
125a 3ph to 18x16a & 6x32a distro	1

# Octagon Main Hall Masterplan



## Key

- DMX patch
- XLR patch
- 32A 3-phase power
- NL 4 patch to LA4X amps
- Permanent rigging point
- CAT6 data
- Socapex power
- 16A independent power
- 125A 3-phase power
- XLR patch between bar bay and bay 3

## Lighting Key

- 1K Fresnel
- Iris Flood
- 50° Intelligent Profile
- 16°-30° Zoom Profile
- Diamond 19 Wash
- Rogue R2 Spot



The Octagon Centre

0114 222 8888

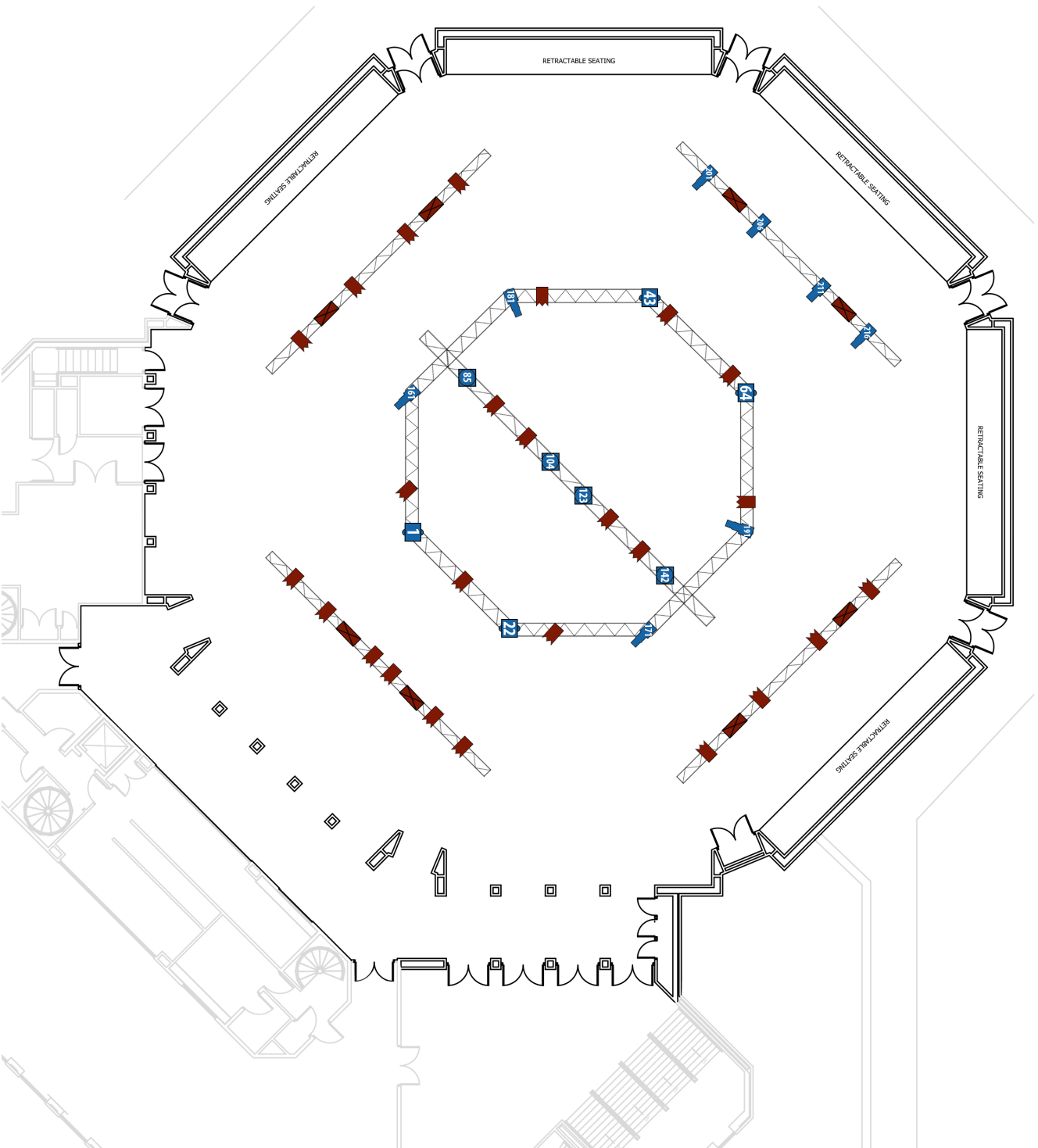
510 270


Show

Date

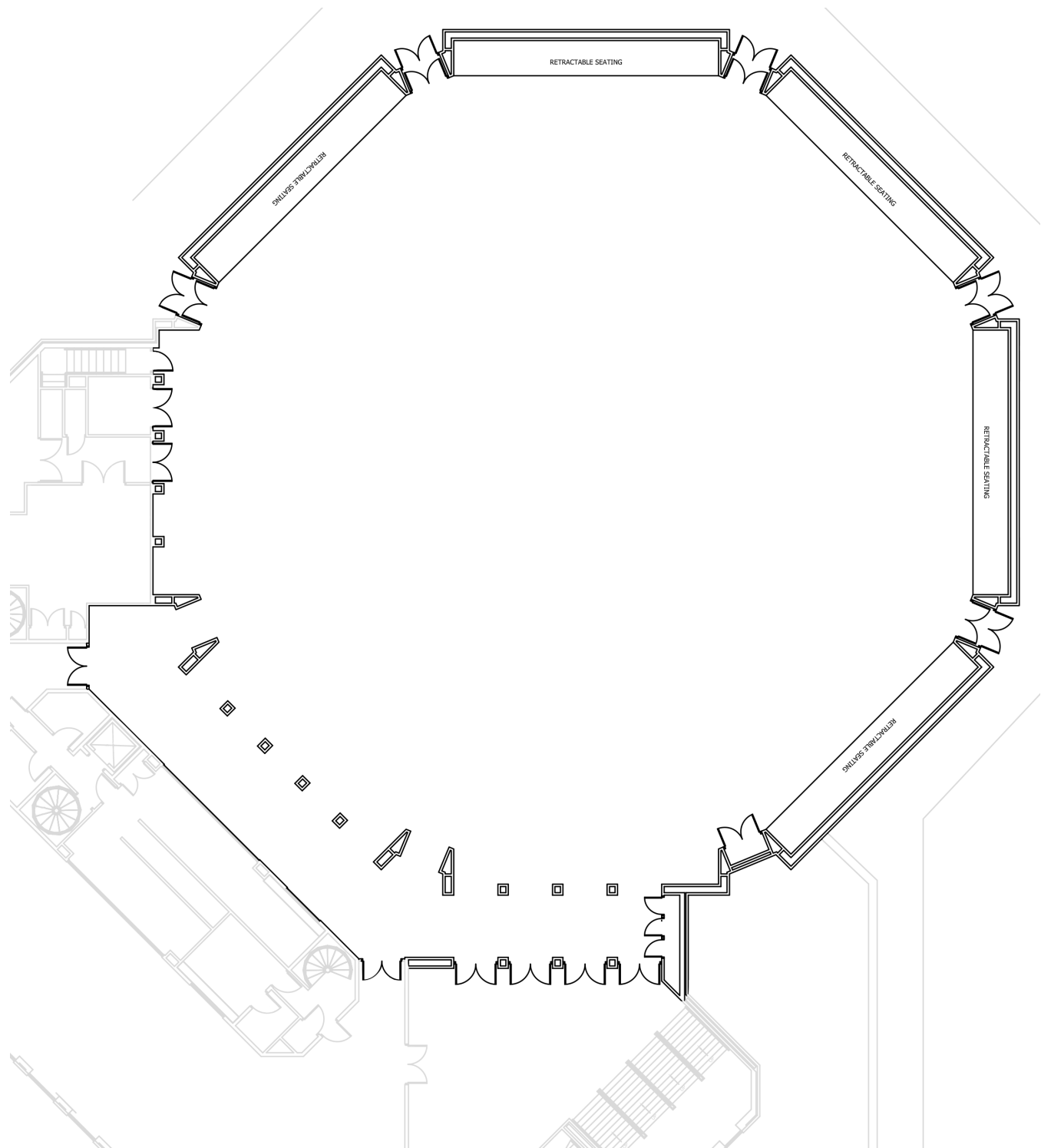



# Octagon standard LX plan



<p><b>Key</b></p> <ul style="list-style-type: none"> <li>● DMX patch</li> <li>● XL R patch</li> <li>● 32A 3-phase power</li> <li>● NL4 patch to LA4X amps</li> <li>● Permanent rigging point</li> <li>● CAT6 data</li> <li>● Socapex power</li> <li>● 16A independent power</li> <li>● 125A 3-phase power</li> <li>● XLR patch between bar bay and bay 3</li> </ul>	<p><b>Lighting Key</b></p> <ul style="list-style-type: none"> <li>◆ 1K Fresnel</li> <li>◆ Iris Flood</li> <li>◆ 50° Intelligent Profile</li> <li>◆ 16-30° Zoom Profile</li> <li>◆ Diamond 19 Wash</li> <li>◆ Rogue R2 Spot</li> </ul>	<p style="text-align: center;">   <b>The Octagon Centre</b> </p>	<p>0114 222 8888 510 270</p>	<p><b>Show</b></p>	<p><b>Date</b></p>
---	---	---	----------------------------------	--------------------	--------------------

# Blank Octagon Plan



<p><b>Key</b></p> <ul style="list-style-type: none"> <li>● DMX patch</li> <li>● XLR patch</li> <li>● 32A 3-phase power</li> <li>● NL4 patch to L64X amps</li> <li>● Permanent rigging point</li> <li>● CAT6 data</li> <li>● Socapex power</li> <li>● 16A independent power</li> <li>● 125A 3-phase power</li> <li>● XLR patch between bar bay and bay 3</li> </ul>	<p><b>Lighting Key</b></p> <ul style="list-style-type: none"> <li>◆ 1K Fresnel</li> <li>◆ Iris Flood</li> <li>◆ 50° Intelligent Profile</li> <li>◆ 16°-30° Zoom Profile</li> <li>◆ Diamond 19 Wash</li> <li>◆ Rogue R2 Spot</li> </ul>	 <p><b>The Octagon Centre</b></p> <p>0114 222 8888 S10 2TQ</p> <p><b>Show</b></p>	<p><b>Date</b></p>
--	--	--	--------------------

# Links

University of Sheffield Health and Safety department home page:

<http://www.sheffield.ac.uk/hs>

University of Sheffield Work at Height policy and procedures:

<https://hs.shef.ac.uk/attachments/173?updated=1484568577>

University of Sheffield blank risk assessment forms:

<https://hs.shef.ac.uk/documents/blank-risk-assessment-form/download>

Performance Venues home page:

<https://https://www.sheffield.ac.uk/cics/performance-venues/drama-studio-octagon-firth-hall>

# Contact information

## For technical enquiries:

Owain Thomas

Performance Venues Technician

Tel: 0114 222 0205

Email: [o.thomas@sheffield.ac.uk](mailto:o.thomas@sheffield.ac.uk)

Ian Caballero

Performance Venues Technician

Tel: 0114 222 0204

Email: [ian.caballero@sheffield.ac.uk](mailto:ian.caballero@sheffield.ac.uk)

## For operational enquiries:

Scott McMullin

Performance Venues Operations Manager

Tel: 0114 222 0200

Email: [s.d.mcmullin@sheffield.ac.uk](mailto:s.d.mcmullin@sheffield.ac.uk)

## For general enquiries:

Performance Venues Main Office

Tel: 0114 222 8888

Email: [performancevenues@sheffield.ac.uk](mailto:performancevenues@sheffield.ac.uk)